



Wecotech IO machines are distinguished by their broad working range: Ø 20 – 200 mm or Ø 20 – 400 mm

With the Tubex-IO S, the inner tool is turned 10° towards the outer tool during the forming process, almost completely preventing segment marks

The Tubex-IO realises precisely-defined forming, expansion, reduction, beading, flaring, flanging and embossing in every position, primarily on round tube

Technical data

Forming unit

- Tube diameter 20 – 200 mm *
- Form length max. 100 mm *
- Tube wall thickness max. 4 mm *
- Axial stroke Ø 100 x 150 mm – 24 t
- Forming stroke with 7° max. in Ø 36 mm *
- Radial stroke 8x – Ø 70 x 60 mm – 12 t
- Pivoting inner and outer tool 10°
- Mean cycle duration: ~5 s

Hydraulic equipment

- Tank capacity 63 L
- Delivery capacity 16 L/min
- Pressure 300 bar
- Motor 5.5 kW – connection 400 V / 16 A
- Valves 24 V Bosch Rexroth

Electrical equipment

- PLC Möller XC100 24V
- IO S software
- Pulse control (minimising of segment gap marks)
- „ON/OFF“ main switch
- „Control ON/OFF“ selector switch
- Emergency STOP
- „Acknowledge emergency STOP“ illuminated switch
- Potentiometer (regulation of no. of pulse forming steps)
- Program selector switch
- Foot pedal

Machine structure

- Universal housing HW-Flex
- Electrical unit with adequate reserve
- Hydraulic unit with screwed housing
- IO S forming unit for vertical applications
- Quick-change system for basic tool and expansion mandrel
- Quick-change interface for outer attachment tools
- Forward and return stroke setting configured via hand wheel and scale
- Dimension L = 1600; W = 850; H = 1100 mm
- Emission sound pressure level: 78 dB (A)
- Colour of housing – Ral 5010 gentian blue
- Colour of control unit – Ral 7035 light grey
- Colour of IO S forming unit – burnished black und polished
- Weight approx. 750 kg

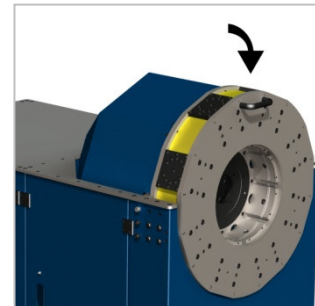
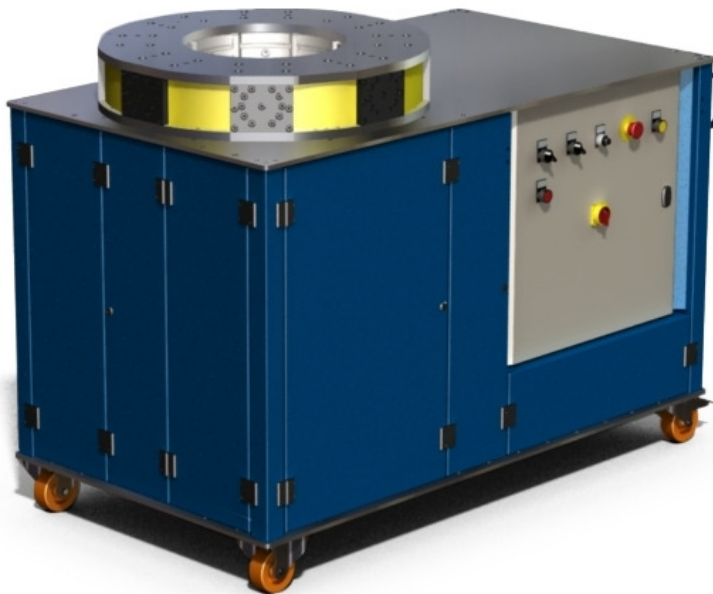
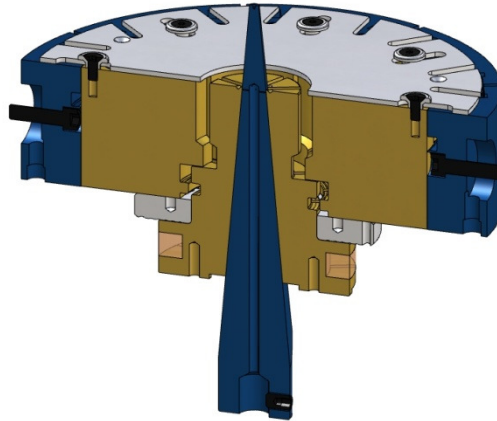
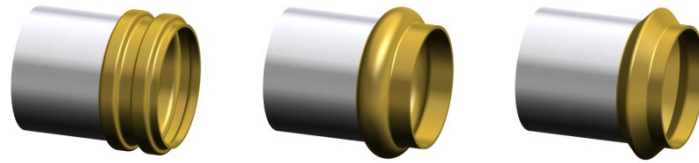
Options

- Choice of colour
- Siemens electrical equipment
- Special program
- Connection without neutral conductor
- Special voltage
- Connection for robot handling via RS232
- Profibus interface
- „No. of shaping steps“ selector switch
- Single piece counter
- Oil cooler
- Oil sump
- Central lubricating sys. for sliding surfaces (Pico)
- Central lubricating sys. for sliding surfaces (Vogel)
- Lubricant level monitoring
- Oil level and oil temperature monitoring
- Filter dirt monitoring
- Analogue absolute position sensor system on inner and outer tool with 5.7“ touchscreen (Microinnovation); Möller
- Analogue absolute position sensor system on inner and outer tool with 5.7“ touchscreen (Microinnovation); Siemens
- Dataset for tooling and program
- Grid with safety light curtain
- Two-handed operation
- Two-handed op. with free-standing control console
- Tube diameter max. 400 mm
- Tube diameter max. 600 mm
- Form length max. 200 mm
- HV head, horizontal and vertical working position
- Axial stroke 150 mm – 12 t (up to -25% cycle duration)
- Axial stroke 150 mm – 34 t (up to +50% cycle duration)
- Increase of pivoting range to 67.5°
- Output boost 7.5 kW – 20 L/min
- Output boost 11 kW – 25 L/min



TUBEX-IO S

UNIVERSAL



HV head