



The Tubex-U was developed as a universal production expander

The modular system and selection of numerous options enable it to tackle practically every expanding task

The tube diameter, wall thickness, shaping and expanding length are in as far as possible freely selectable, thanks to our flexible tool system

Technical data

Forming unit

- Tube diameters from 20 mm *
- Flexible Form length *
- Tube wall thickness max. 8 mm *
- Tube support table Ø 210 mm
- Axial stroke Ø 100 x 150 mm – 24 t
- Expanding stroke with 7° max. in Ø 36 mm *
- Mean cycle duration: ~3 s

Hydraulic equipment

- Tank capacity 63 L
- Delivery capacity 16 L/min
- Pressure 300 bar
- Motor 5.5 kW – connection 400 V / 16 A
- Valves 24 V Bosch Rexroth

Machine structure

- Universal housing HW-Flex
- Electrical unit with adequate reserve
- Hydraulic unit with screwed housing
- Expanding unit for vertical applications
- Quick-change flange for basic tool
- Quick-change interface for expansion mandrel
- Hardened tube support table
- Forward and return stroke setting configured via hand wheel and scale
- Dimensions L = 1200; W = 875; H = 950 mm
- Emissionsound pressure level: 75 dB (A)
- Colour of housing – Ral 5010 gentian blue
- Colour of control unit – Ral 7035 light grey
- Colour of expanding unit – burnished black
- Weight approx. 450 kg

Electrical equipment

- PLC Möller XC100 24V
- Pulse control (minimising of segment gap marks)
- Motor circuit breaker and emergency STOP
- Potentiometer (regulation of no. of pulse forming steps)
- Foot pedal

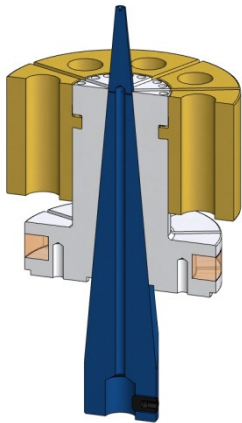
Options

- Choice of colour
- Siemens electrical equipment
- Emergency Stop via safety relay
- Connection without neutral conductor
- Special voltage
- Connection for robot handling via RS232
- Profibus interface
- „No. of shaping steps“ selector switch
- Single piece counter
- Oil cooler
- Oil sump
- Central lubricating sys. for sliding surfaces (Pico)
- Central lubricating sys. for sliding surfaces (Vogel)
- Lubricant level monitoring
- Oil level and oil temperature monitoring
- Filter dirt monitoring
- Analogue absolute position sensor system with 3.5“ touchscreen (Microinnovation); Möller
- Analogue absolute position sensor system with 3.5“ touchscreen (Microinnovation); Siemens
- Horizontal variant L = 1200; W = 875; H = 1350 mm
- Axial stroke 150 mm – 12 t (up to -50% cycle duration)
- Axial stroke 150 mm – 34 t (up to +50% cycle duration)
- Support table Ø 600 mm
- Special tool structure
- Output boost 7.5 kW – 20 L/min
- Output boost 11 kW – 25 L/min
- Punching unit



TUBEX-U

UNIVERSAL



Touchscreen



Horizontal