



The Tubin-U is designed as a universal production impander  
The modular system and selection of numerous  
options enable it to tackle practically every impanding task  
The tube diameter, wall thickness, shaping and impanding length are in as  
far as possible freely selectable, thanks to our flexible tool system

## Technical data

---

### Forming unit

- Tube diameter 10 – 140 mm \*
- Form length max. 100 mm \*
- Tube wall thickness max. 8 mm \*
- Axial stroke  $\varnothing$  100 x 150 mm – 24 t
- Impanding stroke in  $\varnothing$  21 mm \*
- Mean cycle duration: ~3 s

### Hydraulic equipment

- Tank capacity 63 L
- Delivery capacity 16 L/min
- Pressure 300 bar
- Motor 5.5 kW – connection 400 V / 16 A
- Valves 24 V Bosch Rexroth

### Machine structure

- Universal housing HW-Flex
- Electrical unit with adequate reserve
- Hydraulic unit with screwed housing
- Impanding unit for vertical applications
- Forward and return stroke setting configured via hand wheel and scale
- Dimensions vertical var. L = 1200; W = 875; H = 950 mm
- Emissionsound pressure level: 75 dB (A)
- Colour of housing – Ral 5010 gentian blue
- Colour of control unit – Ral 7035 light grey
- Colour of impanding unit – burnished black
- Weight approx. 550 kg

### Electrical equipment

- PLC Möller XC100 24V
- Pulse control (minimising of segment gap marks)
- Motor circuit breaker and emergency STOP
- Potentiometer (regulation of no. of pulse forming steps)
- Foot pedal

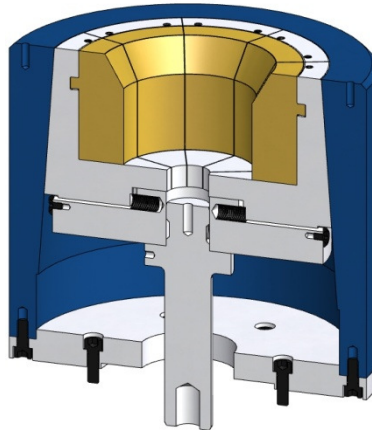
### Options

- Choice of colour
- Siemens electrical equipment
- Emergency Stop via safety relay
- Connection without neutral conductor
- Special voltage
- Connection for robot handling via RS232
- Profibus interface
- „No. of shaping steps“ selector switch
- Single piece counter
- Oil cooler
- Oil sump
- Central lubricating sys. for sliding surfaces (Pico)
- Central lubricating sys. for sliding surfaces (Vogel)
- Lubricant level monitoring
- Oil level and oil temperature monitoring
- Filter dirt monitoring
- Analogue absolute position sensor system with 3.5“ touchscreen (Microinnovation); Möller
- Analogue absolute position sensor system with 3.5“ touchscreen (Microinnovation); Siemens
- Horizontal variant L = 1200; W = 875; H = 1350 mm
- Axial stroke 150 mm – 12 t (up to -50% cycle duration)
- Axial stroke 150 mm – 34 t (up to +50% cycle duration)
- Tube diameter max. 190 mm
- Tube diameter max. 290 mm
- Tube diameter max. 390 mm
- Form length max. 200 mm
- Form length max. 300 mm
- Form length max. 400 mm
- Tool segment distribution 16x / 24x / 32x
- Output boost 7.5 kW – 20 L/min
- Output boost 11 kW – 25 L/min
- Punching unit

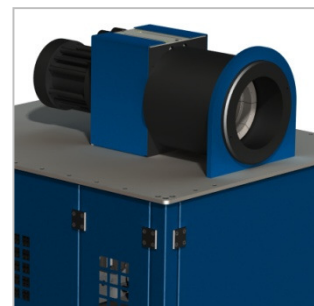


# TUBIN-U

UNIVERSAL



Touchscreen



Horizontal