



Wecomatic-IO is the leading radial forming concept

Large traversing paths on the inner and outer tool and programmable turning options enable the achievement of maximum degrees of forming

Freely-programmable CNC axes ensure strength, speed and precision

The Wecomatic CNC software was developed by practitioners for practitioners. Reliable forming programs can be generated and administered rapidly on the machine

Technical data

Forming unit

- Tube diameter 20 – 200 mm *
- Form length max. 100 mm *
- Tube wall thickness max. 4 mm *
- Axial stroke \varnothing 100 x 150 mm – 18 t
- Forming stroke with 7° max. in \varnothing 36 mm *
- Outer radial stroke 8x – \varnothing 70 x 60 mm – 9 t
- Pivoting inner and outer tool 67.5°
- (minimising of segment gap marks)
- Mean cycle duration: ~5 s

Electrical equipment

- PLC Möller XC201
- 10.4" touchscreen
- „ON/OFF“ main switch
- Emergency STOP
- „ON/OFF“ control switch
- „Acknowledge emergency STOP“ illuminated switch
- „Affirm Start“ button
- CNC IO software, freely programmable
- Dataset for tooling and program
- CNC axis with inner and outer control modules
- Analogue absolute position sensor system, inner and outer
- Foot pedal

Machine structure

- Welded profile frame
- Low and high-voltage electrical unit
- Hydraulic unit fixed on profile steel frame
- CNC IO unit vertically / horizontally adjustable
- Quick-change flange for basic tool
- Quick-change system for expansion mandrel
- Quick-change interface for outer attachment tools
- Inner and outer tool with analogue absolute position sensor system and control valves, complete CNC control
- Oil sump with treadplate
- Dimensions L = 2100; W = 1100; H = 1800 mm
- Emission sound pressure level: 75 dB (A)
- Colour of machine room – Ral 5010 gentian blue
- Colour of control units – Ral 7035 light grey
- Colour of forming unit – black and polished
- Weight approx. 950 kg
- Controllable central lubricating system for sliding surfaces
- Lubricant level monitoring
- Oil level and oil temperature monitoring
- Filter dirt monitoring
- Foot pedal

Hydraulic equipment

- Tank capacity 120 L
- Delivery capacity 70 / 48 L/min
- Pressure 220 bar
- Motor 11 kW – connection 400 V / 32 A
- Control valves 24 V Bosch Rexroth
- Oil/Air heat exchanger 0.15 kW/C°
- Pressure accumulator

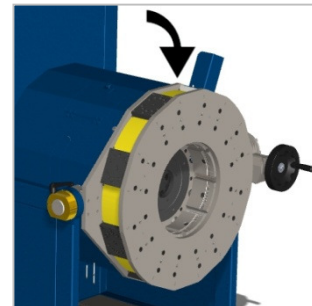
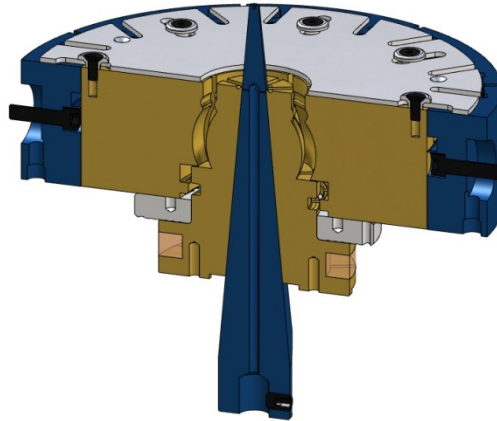
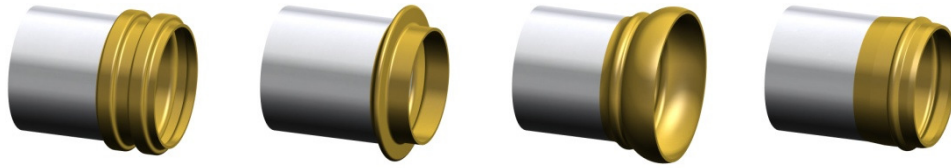
Options

- Choice of colour
- Siemens electrical equipment
- Special voltage
- Tube diameter max. 400 mm
- Tube diameter max. 600 mm
- Form length max. 200 mm
- Form length max. 300 mm
- Axial stroke 150 mm – 9 t (up to -25% cycle duration)
- Axial stroke 150 mm – 25 t (up to +25% cycle duration)
- Axial stroke 200 mm – 60 t (up to +150% cycle duration)
- Pressure increase to 300 bar (up to +40% force)
- Connection for robot handling via RS232
- Profibus interface
- Grid with safety light curtain
- Digital absolute position sensor system SSI (up to -20% cycle duration)
- Two-handed op. with free-standing control console
- Immersible touchscreen on linear arm
- Touchscreen on pivot arm
- External piece counter (operating hours, quantity)
- Oil/Water heat exchanger
- Oil drip tray
- Special tool attachment
- Pivoting inner and outer tool 60°
- Workplace illumination
- Status display
- Optical weld seam detection
- „Manual/Automatic“ key selector switch
- Foot pedal connected via Harting connector



WECOMATIC-IO 11kW

WECO



Working head rotated 90°