



**Wecomatic-IO is the leading radial forming concept**

**Large traversing paths on the inner and outer tool and programmable turning options enable the achievement of maximum degrees of forming**

**Freely-programmable CNC axes ensure strength, speed and precision**

**The Wecomatic CNC software was developed by practitioners for practitioners. Reliable forming programs can be generated and administered rapidly on the machine**

## Technical data

### Forming unit

- Tube diameter 20 – 200 mm \*
- Form length max. 100 mm \*
- Tube wall thickness max. 4 mm \*
- Axial stroke  $\varnothing$  100 x 150 mm – 18 t
- Forming stroke with 7° max. in  $\varnothing$  36 mm \*
- Outer radial stroke 8x –  $\varnothing$  70 x 60 mm – 9 t
- Pivoting inner and outer tool 67.5°
- (minimising of segment gap marks)
- Mean cycle duration: ~4 s

### Electrical equipment

- PLC Möller XC201
- 10.4" touchscreen
- „ON/OFF“ main switch
- Emergency STOP
- „ON/OFF“ control switch
- „Acknowledge emergency STOP“ illuminated switch
- „Affirm Start“ button
- CNC IO software, freely programmable
- Dataset for tooling and program
- CNC axis with inner and outer control modules
- Analogue absolute position sensor system, inner and outer
- Foot pedal

### Machine structure

- Welded profile frame
- Low and high-voltage electrical unit
- Hydraulic unit fixed on profile steel frame
- CNC IO unit vertically / horizontally adjustable
- Quick-change flange for basic tool
- Quick-change system for expansion mandrel
- Quick-change interface for outer attachment tools
- Inner and outer tool with analogue absolute position sensor system and control valves, complete CNC control
- Oil sump with treadplate
- Dimensions L = 2200; W = 1200; H = 1700 mm
- Emission sound pressure level: 77 dB (A)
- Colour of machine room – Ral 5010 gentian blue
- Colour of control units – Ral 7035 light grey
- Colour of forming unit – black and polished
- Weight approx. 1700 kg
- Controllable central lubricating system for sliding surfaces
- Lubricant level monitoring
- Oil level and oil temperature monitoring
- Filter dirt monitoring
- Foot pedal

### Hydraulic equipment

- Tank capacity 200 L
- Delivery capacity 115 / 80 L/min
- Pressure 220 bar
- Motor 2x 11 kW – connection 400 V / 64 A
- Control valves 24 V Bosch Rexroth
- Oil/Air heat exchanger 0.3 kW/C°
- Pressure accumulator

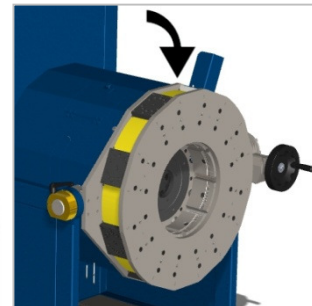
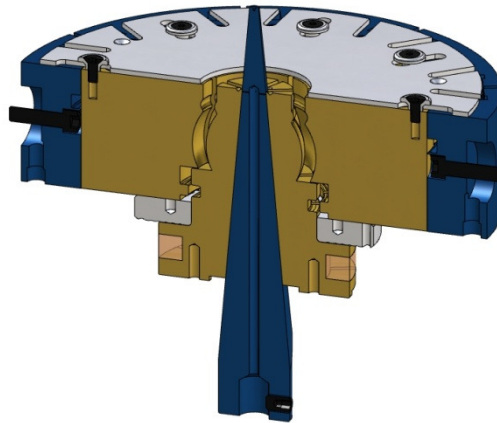
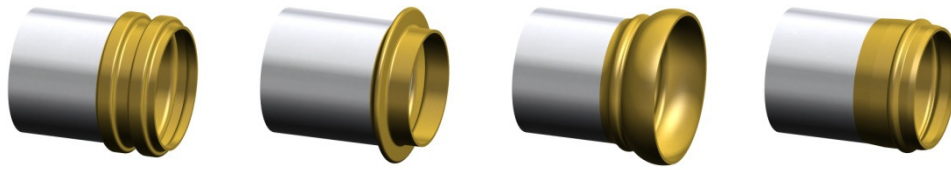
### Options

- Choice of colour
- Siemens electrical equipment
- Special voltage
- Tube diameter max. 400 mm
- Tube diameter max. 600 mm
- Form length max. 200 mm
- Form length max. 300 mm
- Axial stroke 150 mm – 9 t (up to -25% cycle duration)
- Axial stroke 150 mm – 25 t (up to +25% cycle duration)
- Axial stroke 200 mm – 60 t (up to +150% cycle duration)
- Pressure increase to 300 bar (up to +40% force)
- Connection for robot handling via RS232
- Profibus interface
- Grid with safety light curtain
- Digital absolute position sensor system SSI (up to -20% cycle duration)
- Two-handed op. with free-standing control console
- Immersible touchscreen on linear arm
- Touchscreen on pivot arm
- External piece counter (operating hours, quantity)
- Oil/Water heat exchanger
- Oil drip tray
- Special tool attachment
- Pivoting inner and outer tool 60°
- Workplace illumination
- Status display
- Optical weld seam detection
- „Manual/Automatic“ key selector switch
- Foot pedal connected via Harting connector



# WECOMATIC-IO 22kW

WECO



Working head rotated 90°